

# Madikwe

## Table of Contents

Etali Safari Lodge   Madikwe Game Reserve .....	2
Dithaba & Kopano & Lepala   Madikwe Game Reserve.....	4
Jamala Royal Safari Lodge   Madikwe Game Reserve.....	6
Madikwe Hills Private Game Lodge   Madikwe Game Reserve.....	9
Mateya Safari Lodge   Madikwe Game Preserve.....	12
Morokuru Farm House   Madikwe Game Reserve.....	15
Morokuru Owners House   Madikwe Game Reserve .....	17
Molori Safari Lodge   Madikwe Game Reserve .....	19

# Etali Safari Lodge | Madikwe Game Reserve

## Personal Impression

I liked Etali Safari Lodge the moment I stepped off the vehicle. A contemporary and warm interior makes you feel right at home. It is a long narrow main lodge design. On arrival a fantastic welcome drink was offered by a delightful young man with a huge smile. Not sure what it was in that drink but it was very refreshing and had some ginger ale and bite size pieces of tropical fruit. Elephants welcomed us at their watering hole. This set the tone for a great start.



## The Game

Madikwe Game Reserve is huge and has good game. The off roading experience is more limited and it is an entirely different topography to the private reserves around Kruger Park. The mountains are wonderful and the terrain changes as you go to different areas of the reserve. The soil can be dusty, particularly if there has been a shortage of rain. This reserve borders on Botswana so you see animals in this

reserve you do not see in the Kruger area. Examples are the Brown Hyena, black backed jackals, and the huge Kalahari Desert Lions. The reserve has many lodges and there are a lot of vehicles driving the park. However, I felt this to be a positive since there were many people looking for animals - the sightings were numerous. The lodges cooperate with each by way of radios to control the sightings so there are never more than three vehicles at a sighting at a time. At no time did I feel as if the reserve was crowded. You are seeing nature at its finest here, not penned in a small area for the tourists to see.

## Accommodations

The eight rooms are very spread out and there are steps to negotiate between rooms and also going down to the rooms. One aspect of the room you may or may not find appealing is some of the rooms are built incorporating giant rocks. One room had this right behind the bed. They

are all individual buildings with quiet heavy bush in the surrounding areas. The rooms were very nice and all have a nice large private deck with plunge pool. They do have one wheelchair accessible room.



## Public Areas

There is a long deck area the length of the main lodge with tables and chairs with umbrellas. The dining area is large and open to a "cooking island" where you can see the chef preparing your meal. The lounge area and library were comfortable and well designed. Right in front of the deck is a nice sized watering hole. At the time we were there they were building a new watering hole. The main lodge has an extremely comfortable feeling.



## Internet

Complimentary WIFI is available at Etali Safari Lodge.

Website: [Etali Safari Lodge](#)

# Dithaba & Kopano & Lepala | Madikwe Game Reserve

## Personal Impression

The main lodge, Lepala is big and spread out. There are also two really lovely small sister lodges here with only four rooms each and they are Dithaba and Kopano. Perfect for a family group. Dithaba and Kopano are next door to each other so if you are in a large group, it is still possible to eat all your meals together at one lodge. These lodges are contemporary almost in a Santa Fe style. The rooms at all lodges are very similar.



## The Game

Located in Madikwe Game Reserves this reserve was voted “best game” by the family safari participants. We had amazing sightings and they do go off-road for the big five animals and wild dogs. We saw a pack of 18 wild dogs and it was amazing. Located on the border with Botswana and the Kalahari

Desert, Madikwe has animals you will not see in the other game areas. Some of these animals are the brown hyena, jackal, ostrich, cheetah and many of the massive Kalahari Lions. The reserve also has the excellent general game, elephant, zebra, giraffe, wildebeest, and cape buffalo. Madikwe had too many lions and they reduced their lions significantly and it has improved the reserve greatly even the cheetah is making a come-back. Off-roading can be an issue as there are some areas they cannot go and they must have permission first, but we went off-road as much if not more at Madikwe as we did in Sabi Sands. There is SO much land here that it can entail driving further distances to see the great sightings.

## Accommodations

The rooms are basically the same at all the lodges. The rooms feature a wood burning fire place that is lit for you each night while you are at dinner. The rooms are uniquely designed in a wrap-around configuration that is hard to photograph. There is a large, very comfy bed. The

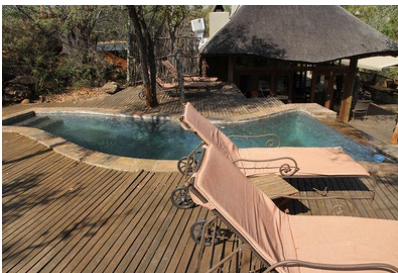


bathrooms are fairly large with double sinks, large tub with candles and a walk-in shower. There is also a large deck with a giant outdoor shower shown in the picture below.



## Public Areas

The public spaces here are very interesting. There is a very intimate feeling about the two smaller lodges, like you are in a home not a lodge. The kitchen table is a country pine table with windows all around just like you would find in a home. At Dithaba, they have an upper viewing deck with some seating with an incredible view over the reserve a nice place to sit in the afternoon and soak in the view. At Lepala there is a wonderful large public lodge with excellent facilities. Some pictures below from all lodges.



## The Food

Breakfast is continental but with eggs cooked to order. They have a combo brunch/lunch menu at lunchtime which was kind of interesting. Dinner was always wonderful starting with some great soups. The food here was excellent and we had great service.

## Internet

WiFi is complimentary

Website: [Madikwe Safari Lodge](http://www.madikwe-safari-lodge.com)

# Jamala Royal Safari Lodge | Madikwe Game Reserve

## Personal Impression

The instant I entered Jamala Royal Safari Lodge I knew it was something special. Beautifully decorated and comfortable and a large water hole full of activity was immediately visible. With an hour of being at the lodge we saw elephants and giraffes (necking) and antelope at the watering hole. It has been mentioned this is an armchair safari just stay at the lodge and watch the waterhole! Children are welcome if the entire lodge is booked.



## The Game

Madikwe Game Reserve is huge and has good game. The off roading experience is more limited and it is an entirely different topography to the private reserves around Kruger Park. The mountains are wonderful and the terrain changes as you go to different areas of the reserve. The soil can be dusty, particularly if there has been a shortage of rain. This reserve borders on

Botswana so you see animals in this reserve you do not see in the Kruger area. Examples are the Brown Hyena, black backed jackals, and the huge Kalahari Desert Lions. The reserve has many lodges and there are a lot of vehicles driving the park. However, I felt this to be a positive since there were many people looking for animals - the sightings were numerous. The lodges cooperate with each by way of radios to control the sightings so there are never more than three vehicles at a sighting at a time. At no time did I feel as if the reserve was crowded. You are



seeing nature at its finest here, not penned in a small area for the tourists to see. Jamala has two experienced wonderful rangers for your daily game drives.

It has been mentioned this is an armchair safari; just stay at the lodge and watch the waterhole! Children are welcome if the entire lodge is booked.

## The Jamala Waterhole Is Amazing!

This waterhole has no equal at any of the 64 game lodges I have visited. There is a natural mineral in the soil that the animals need (similar to cows requiring salt blocks) right at this waterhole so it is an incredibly active waterhole. They have the minerals and water at the same spot. In a two-day period, we were amazed at the activity. Elephants came constantly and zebras came several times a day and stayed for a long time. Although animals are used to vehicles their behavior at this waterhole was what was also amazing. Far more interaction between the animals than I have ever seen from a vehicle. Giraffes, wildebeest, wart hogs, Cape Buffalo also visited the water hole. I have heard from other guests that cats also frequent the waterhole we did not see any cats during our stay.

See the pictures below of the watering hole.



## Accommodations

Only five rooms are available at Jamala and the rooms are really outstanding. Spacious with a sitting area, dining table, huge walk-in dressing area closet. An oversized bed with folding glass doors on two sides of the room that open to a spacious deck with a private plunge pool. The room offers a view of the animals coming and going to the waterhole. Beautifully furnished and luxurious in every aspect. Once you walk in you do not want to leave a really inviting room. All are convenient to the lodge and have no steps to negotiate between the rooms.



## Public Areas

One long public area with a nice dining room, spacious lounge area, a boma at the end and an upper-level lounge for fantastic viewing of the active waterhole. It all feels plush and comfortable and very large for just 10 guests. There is a warm and inviting attitude from the staff that is obvious immediately.



## The Food

Jamala won the award for 2015 for the best safari cuisine in South Africa. Nico Verster, is the chef. He used to work at Birkenhead House in Hermanus where he served up delicious food. I was so happy to see him at Jamala where I think he has reached even greater heights with his imagination cuisine.

## Internet

WiFi is available in the rooms.

**Website:** [Jamala Royal Safari Lodge](http://www.jamala.co.za)



# Madikwe Hills Private Game Lodge | Madikwe Game Reserve

A Seasons in Africa Property

## Personal Impression

Madikwe Game Lodge is situated in the Madikwe Game Reserve. This exclusive lodge has 11 rooms and the finest of accommodations. The rooms are set in the hills with incredible views of the bush below. There are huge boulders all over the property which give it a truly unique ambiance. The lodge is large and spacious with delightful main rooms and the guest rooms are expansive and luxurious. I highly recommend this property.



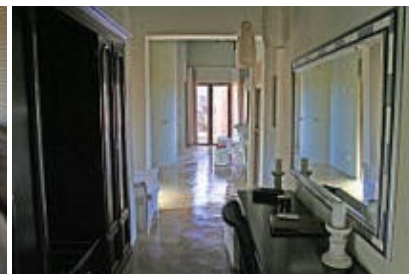
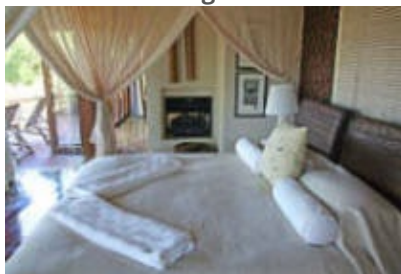
## Accommodations



Suite is an appropriate name for the fabulous rooms at Madikwe Hills. The rooms are on hills and very private offering expansive views of the bush below. On arrival in the room, we looked out to see a large bull elephant wandering in the area right below our room. You then know you are in Africa.

The rooms are large with floor to ceiling windows looking out into the bush, a separate sitting area, all fully air conditioned with a sun deck, private plunge pools as in the picture below. The bathrooms are romantic and VERY large with big bathtubs and indoor and outdoor showers. This is extreme and total luxury.

**Pictures below are images of a standard suite.**





## Game Drives

Game viewing here is plentiful. Animals are everywhere. This reserve has many lodges with a lot of vehicles driving the park. However, I felt this to be positive since there would be many people looking for animals - the sightings were numerous. The lodges cooperate with each other by way of radios to control the sightings so there are never more than three vehicles at a sighting at a time. At no time did I feel as if the reserve was crowded. You are seeing nature at its finest here, not penned in a small area for tourists to see. Add this with the peaceful atmosphere of the bush - it is game viewing at its finest. There are only six guests with a guide and tracker in each land rover for a truly personal experience. Each game drive holds new adventures and the sights you see will be burned into your memory forever. Madikwe Hills also offers bush walks, boma dinners and bush breakfasts. This is a wonderful property where your expectations will be exceeded.



## The Guides

The quality of the guides at all the Seasons in Africa properties are superb. The guides stop at sundown to cook little appetizers and to mix you your favorite drink. You will enjoy this while watching the sunset over the African bush. The rangers post reports on the website (address below) with details of game drives and sightings. It is a nice thing to do and makes for very interesting reading as you anticipate your time in South Africa.

## Dining and Wines

The dining room at Madikwe Hills is spacious and inviting. The food is outstanding. The deck outside the main lounge is the place for lunch and breakfast that will offer incredible views of the bush below. Personal service is the key to Seasons in Africa properties and this is evident in

the wonderful meals served at this fine lodge. The lodge is on an all-inclusive basis with wines and spirits served complimentary (excluding premium imported brands).

### **Spa, Internet and Laundry**

A wonderful spa with a variety of treatments is available. There is a unique outdoor shower and toilet attached to the spa. A gym is also available. Internet and laundry services are available for guests on a complimentary basis.



**Website:** [Madikwe Hills Private Game Lodge](http://www.madikwehills.com)



# Mateya Safari Lodge | Madikwe Game Preserve

## Madikwe Game Preserve – The ultimate in luxury in South Africa

In our opinion this is one of the most luxurious lodges in South Africa. We have been to many properties but this lodge is truly unique. This is a very upscale property full of exquisite art work and expensive furnishings. No cost was spared in building this elegant lodge. Only 10 guests are pampered here in the spacious main lodge. Space is all around you.



The rooms, foyer and main lodge areas are stunning. Beautiful woods, sculptures and a spacious luxurious feel permeate the lodge. The exquisite doors have been transported from Zanzibar and are not only on the main lodge buildings but on each luxury suite as well. This is truly the ULTIMATE in luxury. Pictures cannot capture the beauty and luxury of Mateya. The managers of the property, Shai and Madeleine have created a

warm and friendly atmosphere where the guests can relax and experience gracious service without the formality that one might expect in such elegant surroundings.

### Location

In the Madikwe Game Reserve, Mateya is in the heart of the bush. Only a 50-minute flight from Johannesburg with daily charter service by Federal Air. The rooms are overlooking the bush with outstanding views.

### Accommodations

The accommodations are 5 luxurious and very private large villas. All air conditioned, with private plunge pools on large decks, huge bathrooms and outdoor showers and fireplaces. Total luxury! This is a room you just want to stay in and never leave. The details here are truly amazing right down to all the coat hangers being padded. No item has been overlooked to make your experience as luxurious as possible.



[CLICK HERE FOR MORE PICTURES FROM MATEYA TAKEN BY KEENE LUXURY TRAVEL](#)

## Game Drives

Game viewing here is plentiful. Animals are everywhere. The reserve has many lodges and there are a lot of vehicles driving the park. However, I felt this to be a positive since there were many people looking for animals - the sightings were numerous. The lodges cooperate with each by way of radios to control the sightings so there are never more than three vehicles at a sighting at a time. At no time did I feel as if the reserve was crowded. You are seeing nature at its finest here, not penned in a small area for the tourists to see. Add this with the peaceful atmosphere of the bush - it is game viewing at its finest.

There are only four guests with the field guide in each land rover for a truly personal experience. To my knowledge, there is no other park that offers land rovers that accommodate only four guests. All the space you will need to take your African wildlife pictures. Each game drive holds new adventures and the sights you see will be burned into your memory forever. Mateya also offers bush walks, boma dinners and bush breakfasts. This is a wonderful property where your expectations will be exceeded.



## Dining and the Lodge Public Areas

The gourmet food is so good that it will rival any fine restaurant in Paris. The entire dining experience was the most incredible experience I have ever had. The lodge has different table settings every night that are really exquisite, see the pictures shown. The fresh flowers, candles and the Arthur Court accessories complete the stunning tables. The lavish breakfast buffet, complete with flowers on each offering and the cooked to order breakfast was really special.

The main dining room table in the lodge is very elegant and can seat up to 16 people, although the lodge only holds 10 guests. The lodge features an exquisite large wine cellar with an incredible selection of wines where intimate dinners can also be served. Dinners are served in different venues each night to enhance every evening's dining experience. The Boma is in a

round with a deck built around a sunken fireplace. The lodge is on an all-inclusive basis and wines and spirits are complimentary (excluding premium imported brands or specially selected wines from the extensive wine cellar).



## Services

Complimentary internet facilities are available. Laundry is included on a complimentary basis.

## Spa

The camp offers a spa with many treatments available.

## Summary

If you want an experience you will never forget with outstanding game viewing - this is an excellent choice.

**Website:** [Mateya Safari Lodge](#)



# Morokuru Farm House | Madikwe Game Reserve

A Relais & Chateau Property

## Personal Impression

The Morokuru Farm House is perfect for a family and is designed with in mind. However, couples could also be very comfortable at Morokuru. The house has five rooms and can accommodate 10 people. The drive-up appeal is unique with a huge lawn and brick pathway up to the front door.

The area around the lodge is big five free so the concern of encountering dangerous animals with children is removed. It feels like a large and modern farmhouse on entering.



## The Game

Madikwe Game Reserve is huge and has good game. The off roading experience is more limited and it is an entirely different topography to the private reserves around Kruger Park. The mountains are wonderful and the terrain changes as you go to different areas of the reserve. The soil can be dusty, particularly if there has been a shortage of rain. This reserve borders on Botswana so you see animals in this reserve

you do not see in the Kruger area. Examples are the Brown Hyena, black backed jackals, and the huge Kalahari Desert Lions. The reserve has many lodges and there are a lot of vehicles driving the park. However, I felt this to be a positive since there were many people looking for animals - the sightings were numerous. The lodges cooperate with each by way of radios to control the sightings so there are never more than three vehicles at a sighting at a time. At no time did I feel as if the reserve was crowded. You are seeing nature at its finest here, not penned in a small area for the tourists to see.

## Accommodations

The rooms are bright and airy with light woods and colors. A storage wall of hanging, drawers and shelves is located behind the bed that is very convenient and spacious. The bathrooms are really nice with a wood wall, huge square tiles, double sinks, big walk-in shower and separate bathtub. The front door is off the courtyard and the interior wall looks out onto a deck and the bush. Perfect set up for a family group.



## Public Areas

As you step inside you instantly get the feeling of space. To your right, is a large lounge with oversized sofas and tables in muted beige tones. Straight ahead you look into the very spacious courtyard. To the left is the dining room. You can see the entry to kitchen where you can help yourself and where your chef prepares your meal. This area the interior decorating is an appealing mixture of brick, wood and contemporary carpeting. The courtyard has divided sections with dining tables a wonderful place for children to play. A combination of pebbles, grass, planted areas and brick. All the guest rooms open off of the courtyard. The swimming pool is on a raised area surrounded by green manicured lawns. There is also a bathtub off to the side in a private area where you can bathe in the bush if that appeals to you.



## Internet

Internet is available at the Farm House.

Website: [Morokuru Fame House](http://MorokuruFameHouse.com)



# Morokuru Owners House | Madikwe Game Reserve

A Relais & Chateau Property

## Personal Impression

The Morokuru Owners House is like being in a tree house. You walk down a wooden raised pathway surrounded by large trees. This lodge only has two bedrooms to accommodate four guests and it is so beautifully decorated with enough space for a lodge for a lot more guests. The pool area is larger than lodges with many rooms. Incredible luxury for just four guests. Definitely “over the top” accommodations for just four people.



## The Game

Madikwe Game Reserve is huge and has good game. The off roading experience is more limited and it is an entirely different topography to the private reserves around Kruger Park. The mountains are wonderful and the terrain changes as you go to different areas of the reserve. The soil can be dusty, particularly if there has been a shortage of rain. This reserve borders on Botswana so you see animals in this

reserve you do not see in the Kruger area. Examples are the Brown Hyena, black backed jackals, and the huge Kalahari Desert Lions. The reserve has many lodges and there are a lot of vehicles driving the park. However, I felt this to be a positive since there were many people looking for animals - the sightings were numerous. The lodges cooperate with each by way of radios to control the sightings so there are never more than three vehicles at a sighting at a time. At no time did I feel as if the reserve was crowded. You are seeing nature at its finest here, not penned in a small area for the tourists to see.



## Accommodations

The two bedrooms are large with oversized King Beds. The room has glass around two sides and the glass doors open onto a private deck. The bathrooms are really large with a rock wall, double sinks, oversized shower and bathtub. Both rooms are about the same size.



## Public Areas

The main lounge is a mixture of brick, wood with contemporary comfortable furnishings. The trees are visible through glass walls with doors that open onto the deck. Light streams in the room. A large fireplace is the center of the main lounge. There is a TV/Library room, dining area and kitchen and a massive wine cellar full of wines.

The pool area is on a lower level with a very large pool and two-tiered deck area. There is a fire pit with four rattan chairs and a bath tub.



## Internet

Internet is available at the Owners House.

Website: [Morokuru Owners House.](#)

# Molori Safari Lodge | Madikwe Game Reserve

## Personal Impression

Molori Safari Lodge is very spread out with lots of steps between the different areas. This creates privacy but also an issue for those who do not like steps. It has a different feel than most safari lodge because of the distances between rooms and areas of the lodge.



## The Game

Madikwe Game Reserve is huge and has good game. The off roading experience is more limited and it is an entirely different topography to the private reserves around Kruger Park. The mountains are wonderful and the terrain changes as you go to different areas of the reserve.



The soil can be dusty, particularly if there has been a shortage of rain. This reserve borders on Botswana so you see animals in this reserve you do not see in the Kruger area. Examples are the Brown Hyena, black backed jackals, and the huge Kalahari Desert Lions. The reserve has many lodges and there are a lot of vehicles driving the park. However, I felt this to be a positive since there were many people looking for animals - the

sightings were numerous. The lodges cooperate with each by way of radios to control the sightings so there are never more than three vehicles at a sighting at a time. At no time did I feel as if the reserve was crowded. You are seeing nature at its finest here, not penned in a small area for the tourists to see.



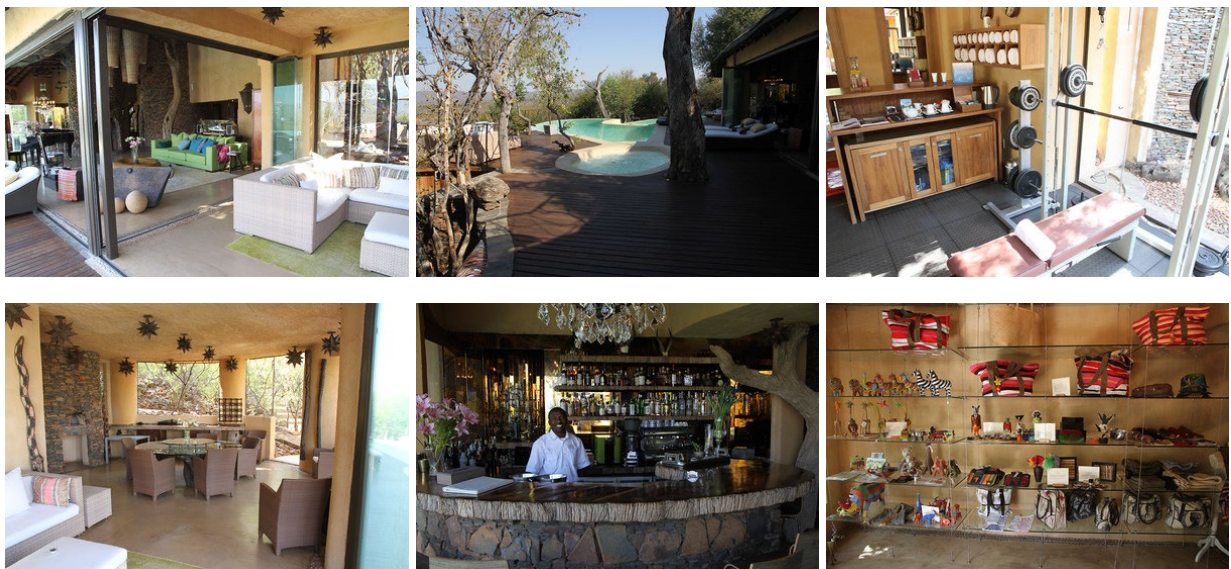
## Accommodations

All of the five suites are different. The price point of course dictates the size and location of the suite. All the suites are certainly comfortable but as you go up the price point some of the suits are massive and stunningly beautiful. Keep in mind if steps and distance are an issue for you then you need to inquire as to the proximity to the main lodge. The lodge does have a golf cart to transport you to your suite.



## Public Areas

The main lodge is really quite beautiful and spacious and very flexible in creating private areas due to the layout of the rooms. There is a lookout area close to the spa up quite a few steps that gives a great overview of the reserve.





## Internet

Internet is available at Molori Safari Lodge.

**Website:** [Molori Safari Lodge](#)